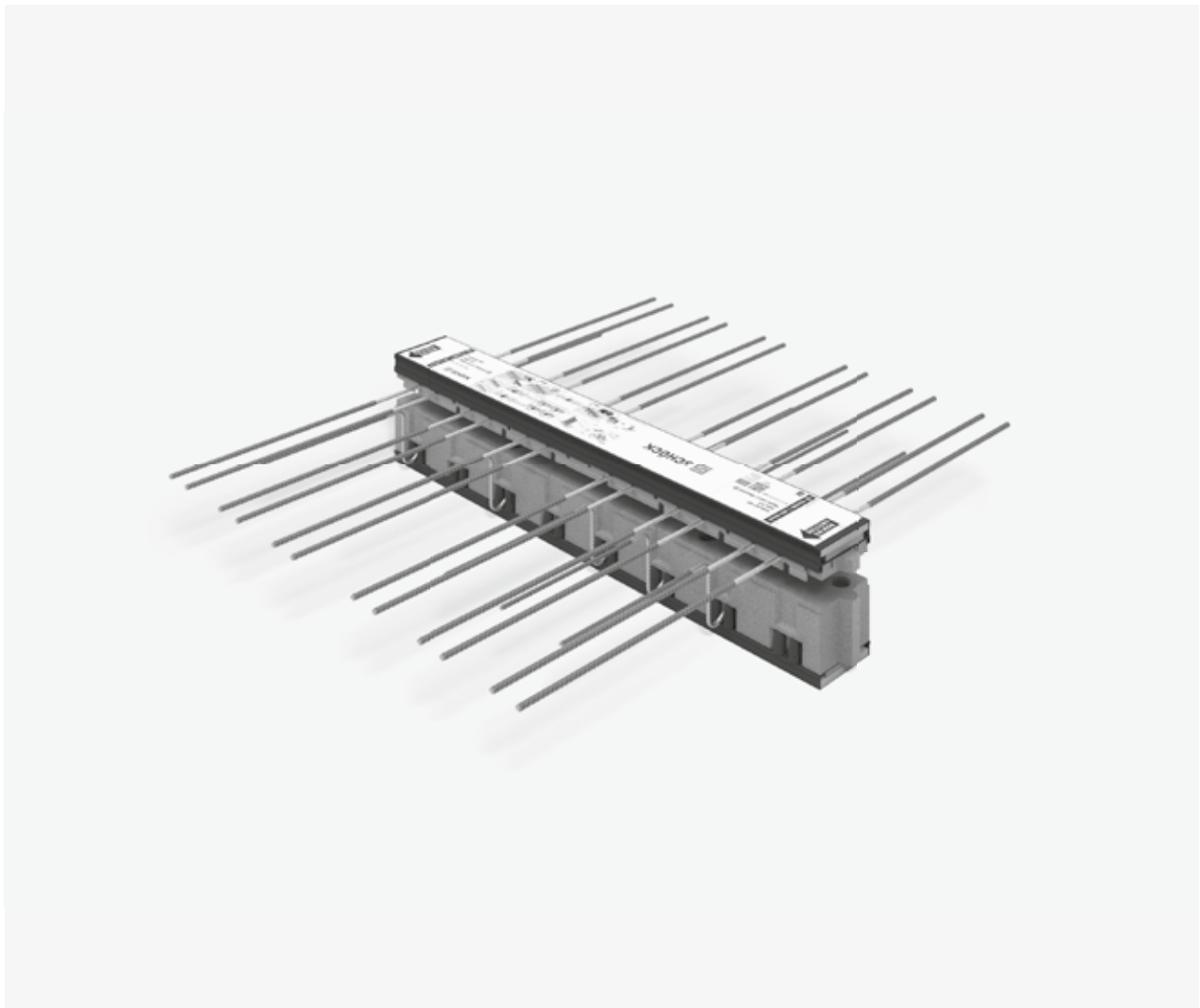


## Schöck Isokorb® XT/T Typ K-F

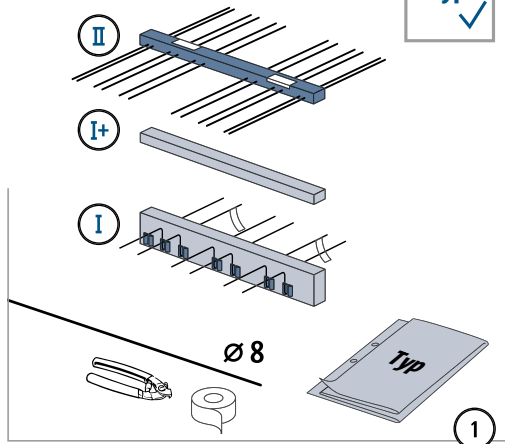


XT/T  
Typ K-F

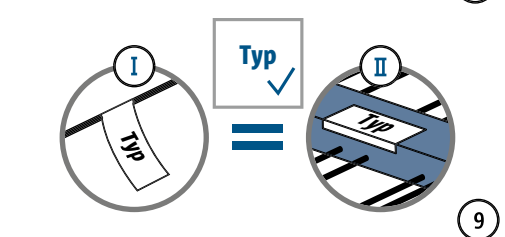
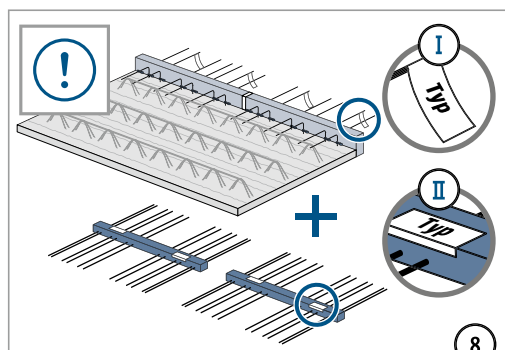
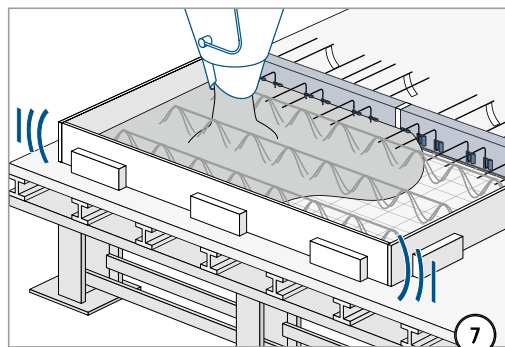
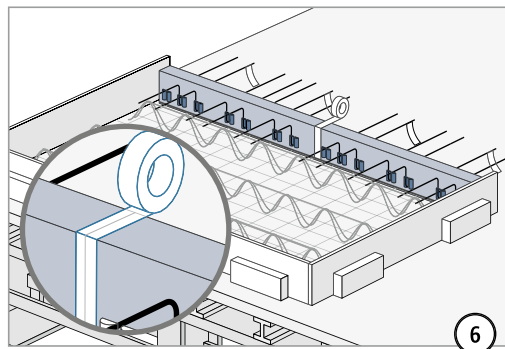
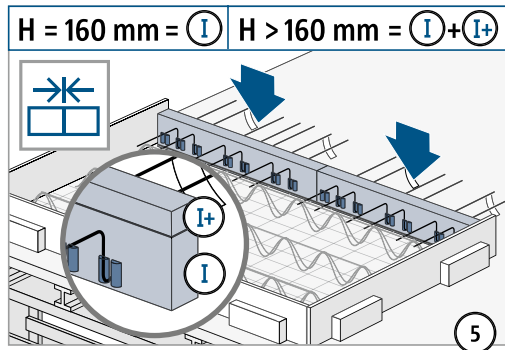
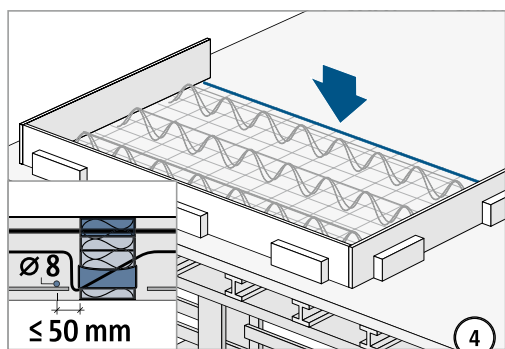
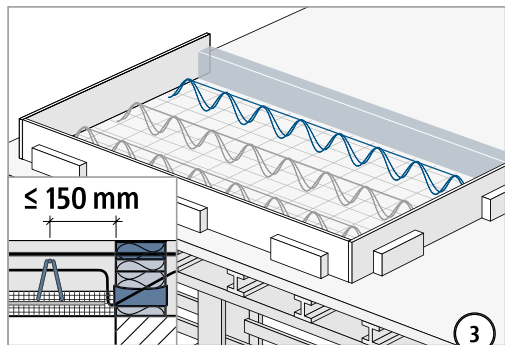
Stahlbeton – Stahlbeton

# Einbauanleitung – Fertigteilwerk

## Typ K-F

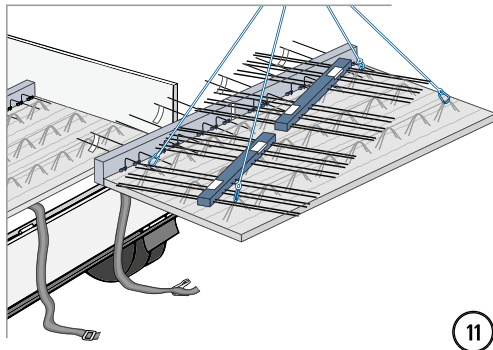
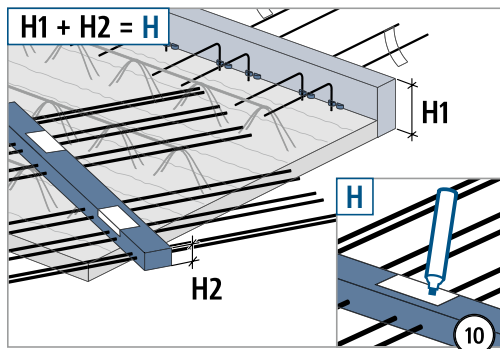


H	=	I	+	I+	+	II
160 mm	=	114	+	--	+	46
180 mm	=	114	+	20	+	46
190 mm	=	114	+	30	+	46
200 mm	=	114	+	40	+	46
⋮		⋮		⋮		⋮
250 mm	=	114	+	3 · 30	+	46



Auf gleiche Typenbezeichnung achten.

## Einbauanleitung – Fertigteilwerk

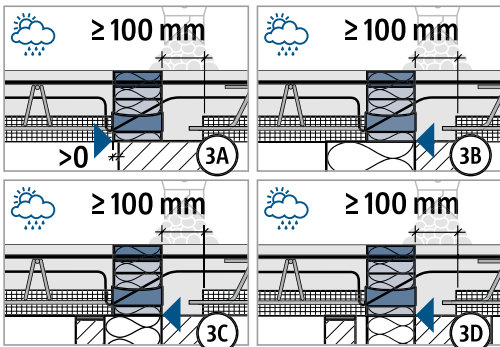
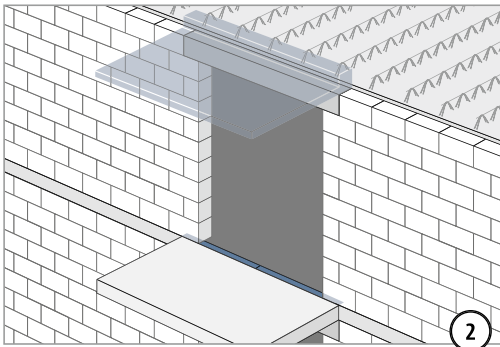
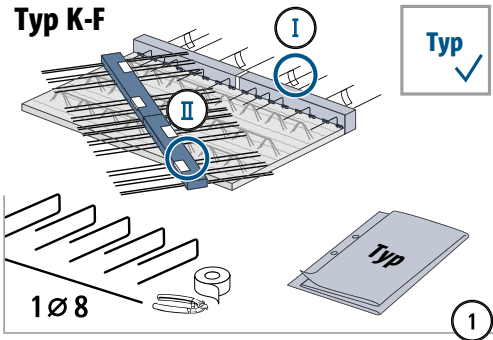
XT/T  
Typ K-F

Stahlbeton – Stahlbeton

# Einbauanleitung – Fertigteil Baustelle

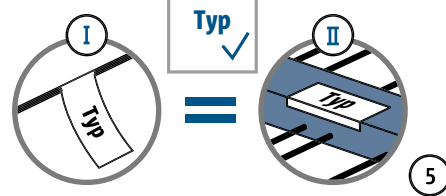
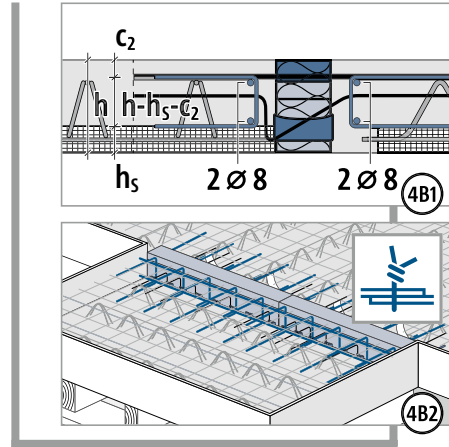
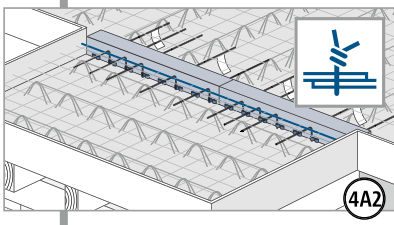
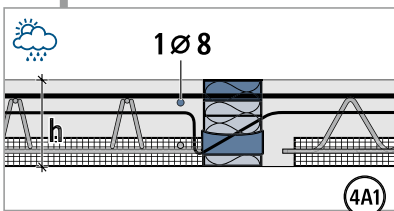
XT/T  
Typ K-F

Stahlbeton – Stahlbeton

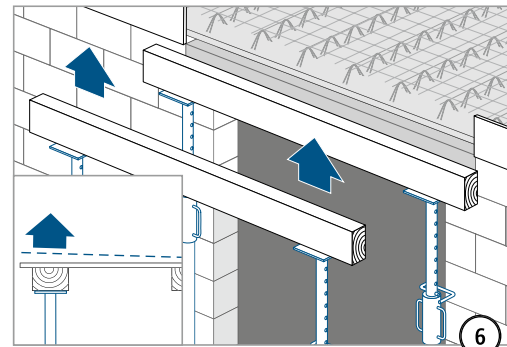


Druckfuge unbedingt mit Ortbeton verfüllen!  
Fugenbreite ≥ 100 mm.

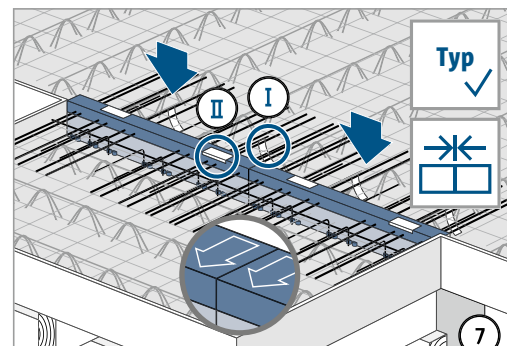
A		B
$h \leq 170 \text{ mm}$	T Typ K-F	$h > 170 \text{ mm}$
$h \leq 180 \text{ mm}$	XT Typ K-F	$h > 180 \text{ mm}$



Auf gleiche Typenbezeichnung achten.



Schalung gemäß Werkplan überhöhen.



Oberteil II mit Zugstäben unbedingt einbauen!

## Einbauanleitung – Fertigteil Baustelle

